

Colours

The Click50 range is available in three different colours:



Pure white



Signal white



Traffic black

Accessories



Back box



Extender



Extended faceplate



EU faceplate



UK faceplate



CH faceplate



Flush frame



Back cover for SGIM



Blank panel



Single galvanic isolator

- 2.0 GHz single output single galvanic isolator
- Compact design
- Fits 25 mm x 50 mm Euro data outlet socket
- 90 degree IEC male outlet port
- Cable clamp input
- Exceeds EN Class A +10 dB screening requirements



Double galvanic isolator

- 2 GHz single output double galvanic isolator
- Compact design
- Fits 25 mm x 50 mm Euro data outlet socket
- 45 degree F female outlet port
- Flexible mini-coax fly lead input with F-type female connector
- Exceeds EN Class A +10 dB screening requirements
- Input F female connector secured with 85 mm insulation sleeve



Optical outlet

- Simplex and duplex LC/APC adapter
- Fits 25 mm x 50 mm Euro data outlet socket
- Integrated fibre management tray available in both left and right configurations
- 45 degree outlet port
- Spring loaded safety shutter

Full technical specifications
available in our platform guide

technetix.com

Click50

Modular outlet platform

technetix



The modular outlet platform

Technetix' Click50 (CL50) is a premise outlet solution designed for the DOCSIS 3.1 (2 GHz) market. The system is designed with migrating networks in mind, aiming to reduce installer time and truck rolls.

The modular solution can be configured with upgradable components to support migrating networks from HFC to PON. It is entirely future-proof, simple to install, easy to upgrade and can operate in RF and optical networks simultaneously.

The CL50 series is designed to operate with high-performance isolators that work up to 2 GHz. It provides full protection against hazardous surge voltages and mains faults. Very high screening efficiency avoids interference and the series is optimised to provide excellent LTE frequency ingress screening (digital dividend).

Available in:

- Three colours: signal white, pure white and traffic black
- All standard European frame sizes.

RoHS and WEEE compliant, CE marked.

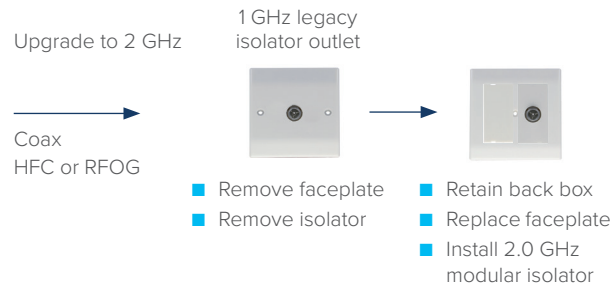
Benefits:

- Modular, quick and easy to install
- Allows easy migration from coax, to hybrid, to fibre networks
- Available in all European frame sizes
- Compact and aesthetically pleasing
- Flexible and can be configured to meet most applications
- Scope for development and the addition of modular custom features.

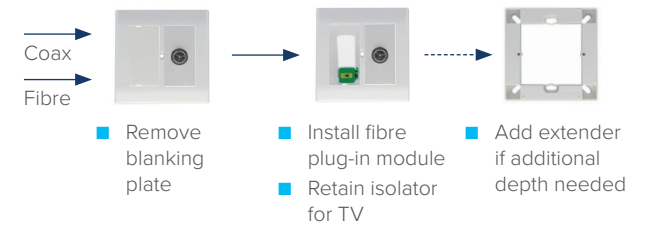
The Click50 solution addresses the needs of a changing market, while enhancing legacy in-home networks across the world.

Legacy upgrade

Upgrading from 1 GHz to DOCSIS 3.1 (2 GHz)



Upgrade to FTTH, CATV overlay



Why Click50 instead of traditional single use outlets

Click50 isn't just a platform to make upgrading premises to FTTH easier. Our platform is compatible with third party 50x25 mm modules too, so customers are free to add AV, network and other telecoms ports for both home and businesses.

